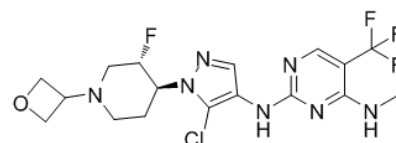


**Product Name** : GNE-9605  
**Cat. No.** : PC-42945  
**CAS No.** : 1536200-31-3  
**Molecular Formula** : C<sub>17</sub>H<sub>20</sub>ClF<sub>4</sub>N<sub>7</sub>O  
**Molecular Weight** : 449.8336  
**Target** : LRRK2  
**Solubility** : DMSO: ≥ 60 mg/mL



## Biological Activity

GNE-9605 is a highly potent, selective, brain penetrant LRRK2 inhibitor with  $K_i$  of 2 nM, pLRRK2  $IC_{50}$  of 19 nM; displays excellent selectivity against 178-membered Invitrogen kinase panel, as well as a representative panel of receptors and ion channels; demonstrates robust concentration-dependent inhibition of LRRK2 Ser1292 autophosphorylation ( $IC_{50}$ =20 nM) in BAC transgenic mice expressing human LRRK2 protein with the G2019S Parkinson's disease mutation.

## References

Estrada AA, et al. J Med Chem. 2014 Feb 13;57(3):921-36.

**Caution: Product has not been fully validated for medical applications. Lab Use Only!**

E-mail: tech@probechem.com